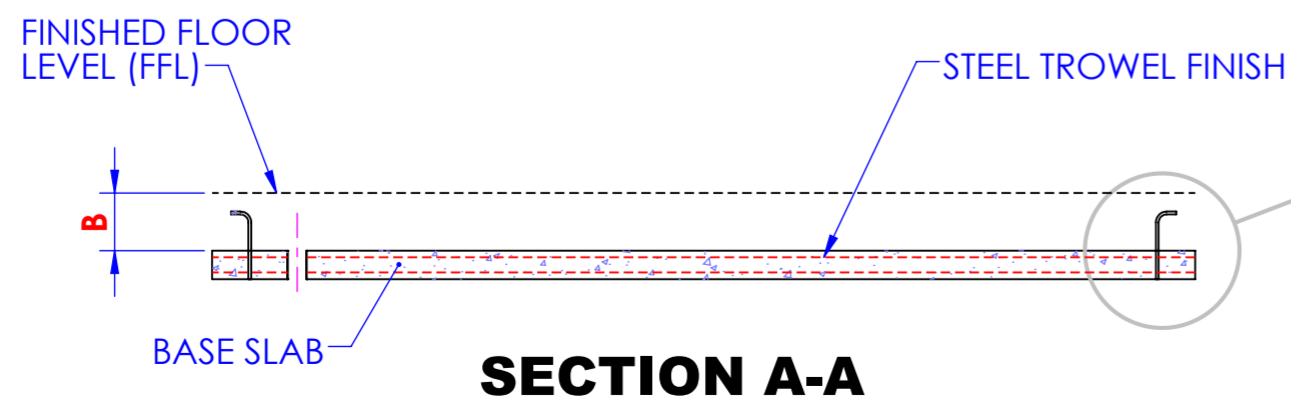
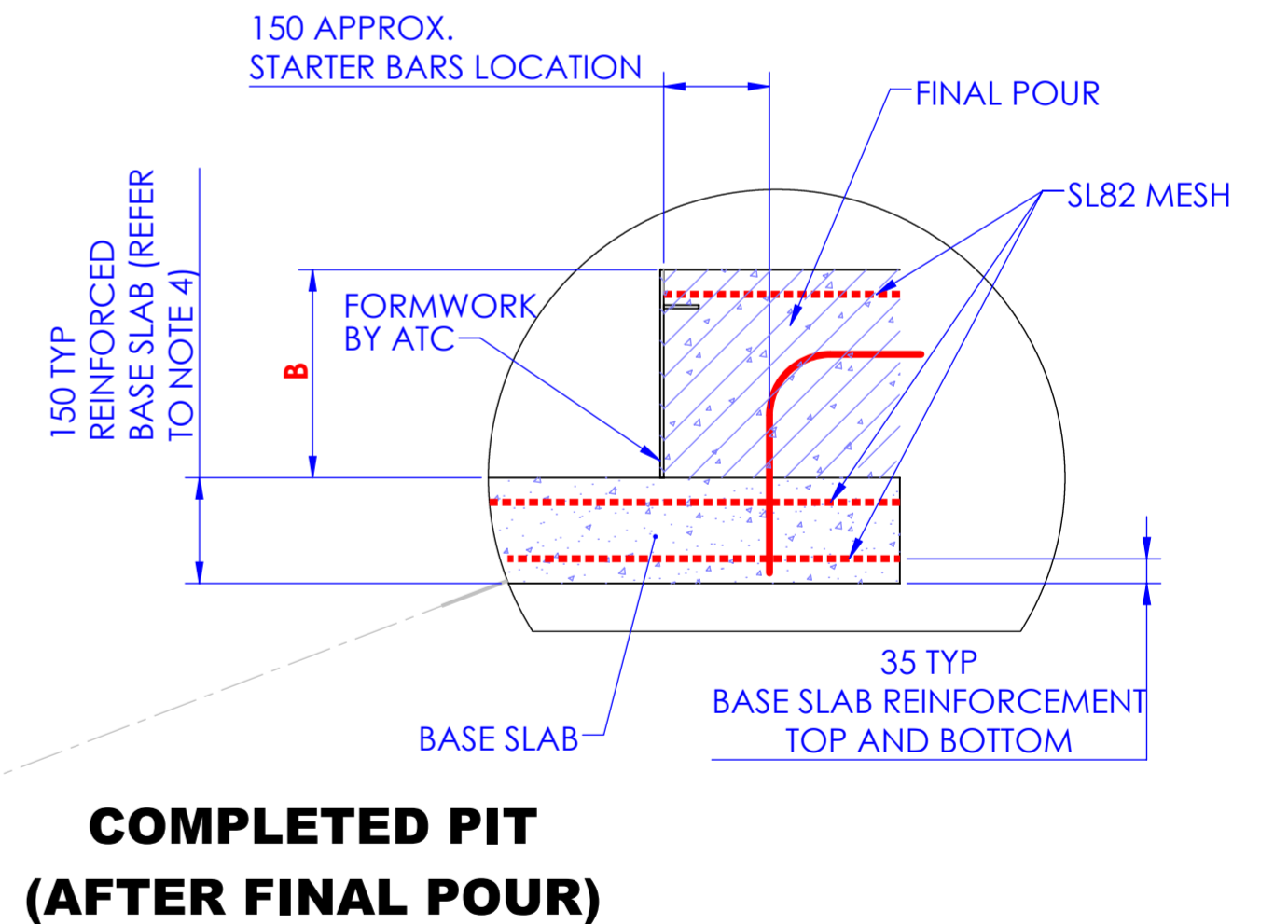
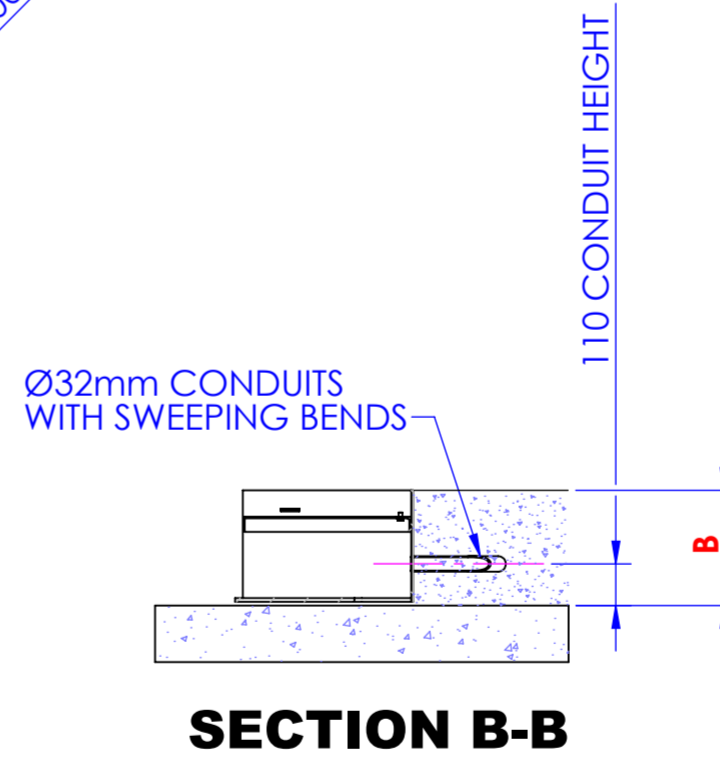
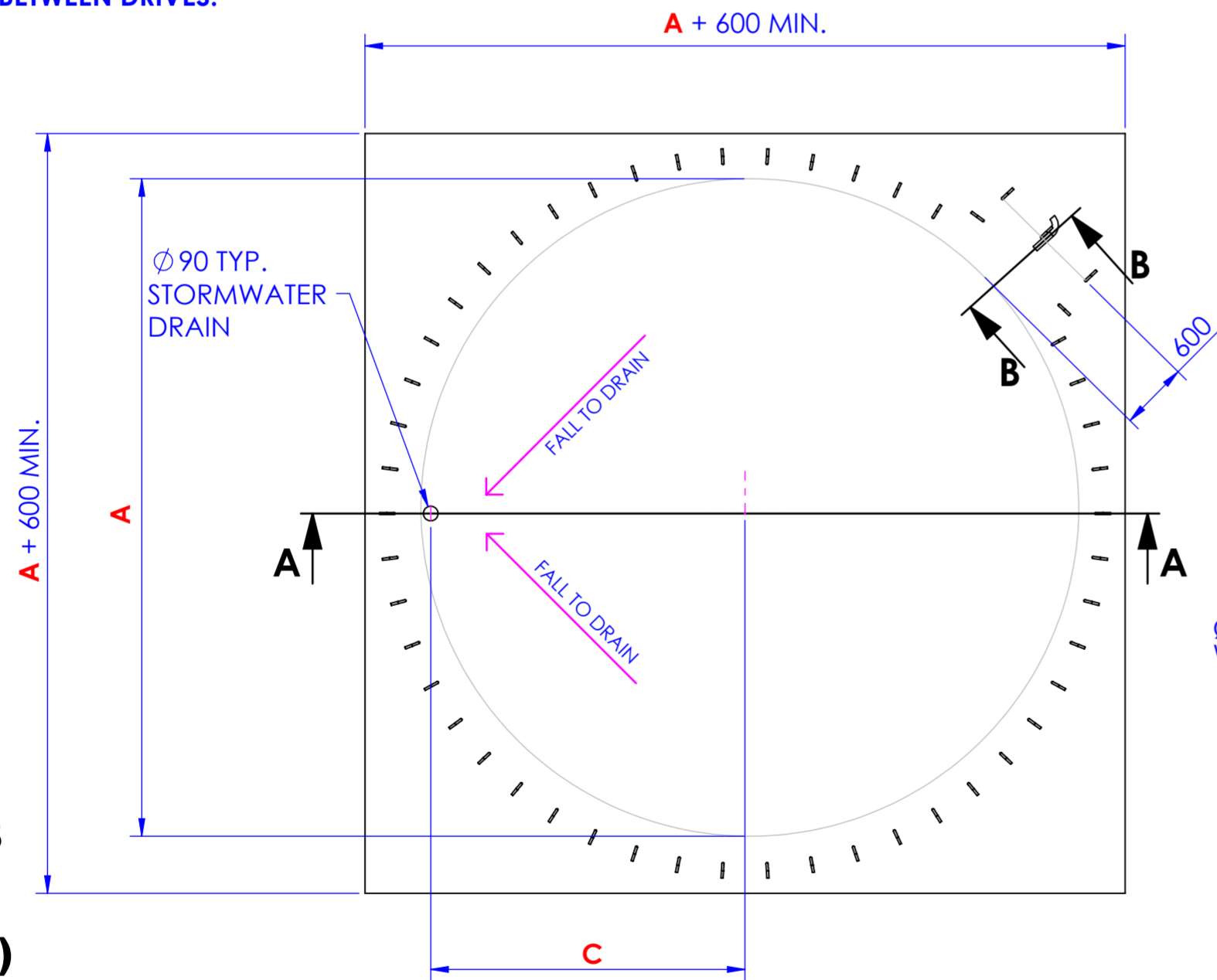
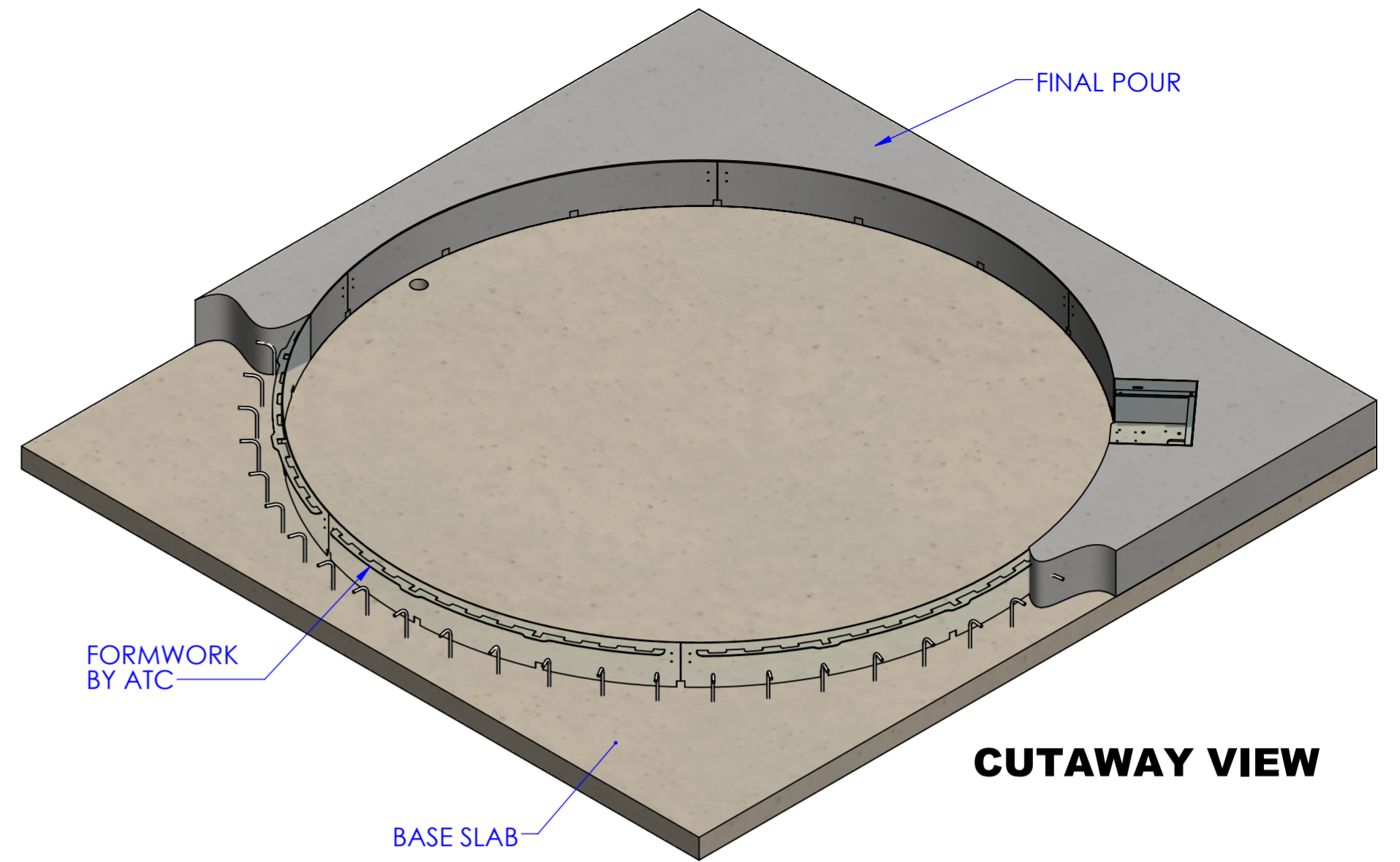


PIT OPTION 1 - BLIND SLAB - RECTANGLE

NOTES

1. THE OVERALL SIZE AND SHAPE OF THE BLIND SLAB MAY BE ADJUSTED TO SUIT THE INSTALLATION SITE. REFER TO PIT OPTION 3 FOR MINIMAL BLIND SLAB DIMENSIONS.
2. IF DRIVE IS TO BE LOCATED PARALLEL TO ONE OF THE SIDES (IE NOT AT 45° AS SHOWN) THEN THE PIT WITH IN THE DIRECTION OF THE DRIVE MUST BE INCREASED BY 450mm.
3. THE ANGLE OF THE DRAIN FROM THE CENTRE OF THE PIT IS NOT IMPORTANT, THE DRAIN CAN BE LOCATED ANYWHERE AROUND THE PIT BUT NEEDS TO BE AT THE SPECIFIED DIMENSION FROM THE CENTRE OF THE PIT. IF THE BLIND SLAB IS ON A SLOPE THEN THE DRAIN IS TO BE POSITIONED AT THE ANGLE OF THE LOWEST POINT.
4. IT IS THE CLIENTS RESPONSIBILITY TO ENSURE THE GENERAL SPECIFICATIONS PROVIDED HERE ARE SUITABLE TO THEIR SPECIFIC SITE REQUIREMENTS INCLUDING LOCAL LEGAL REQUIREMENTS.
5. CONCRETE TO BE POURED AT LEAST 7 DAYS PRIOR TO FORMWORK INSTALLATION.
6. PACK TURNABLE GAP WITH ABLE FLEX WHEN POURING CONCRETE IN AND AROUND TURNTABLE.
7. FOR PAVER RISER TURNTABLES ONLY:
 1. NO ACCELERANTS TO BE ADDED TO CONCRETE. RAPID SETTING DUE TO USE OF ACCELERANTS IS LIKELY TO CAUSE DISTORTION OF THE TURNTABLE SURFACE.
 2. NO TYING OFF REINFORCING IN TURNTABLE FILL TO TURNTABLE STRUCTURE.

REFER TO DOCUMENT E00021 FOR GUIDANCE ON SLAB SELECTION AND THE TURNTABLE INSTALLATION PROCESS.
FOR DUAL DRIVE TURNTABLES, REFER TO THE TECHNICAL SPECIFICATION DOCUMENT FOR THE ANGLE REQUIRED BETWEEN DRIVES.



REFER TO TECHNICAL SPECIFICATION DOCUMENT FOR INDIVIDUAL TURNTABLE DIMENSIONS.

A = TURNTABLE DIAMETER
B = SLAB DEPTH
C = DRAIN RADIUS

REV	DATE	REVISION DESCRIPTION	DRN	ECN
B	26/04/2023	INFORMATION UPDATE	PA	-
A	06/02/2023	ISSUED FOR MANUFACTURE	PA	-

3RD ANGLE PROJECTION
DRAWING TO AS1100
IF IN DOUBT ASK
DIMENSIONS IN mm U.N.O.
TOLERANCES U.N.O.
• FABRICATED PARTS: ± 2mm
• MACHINED PARTS: ± 0.1mm
• ANGULAR: ± 0.5°
DEBURR AND BREAK ALL SHARP EDGES

AUSTRALIAN TURNTABLES
61 Collins Street
Kangaroo Flat VIC 3555
Australia
+61 3 5447 0525
w.turntables.com.au

Drawn PA Date 06/02/2023
Designed PA Date
Approved Date

Material
Finish

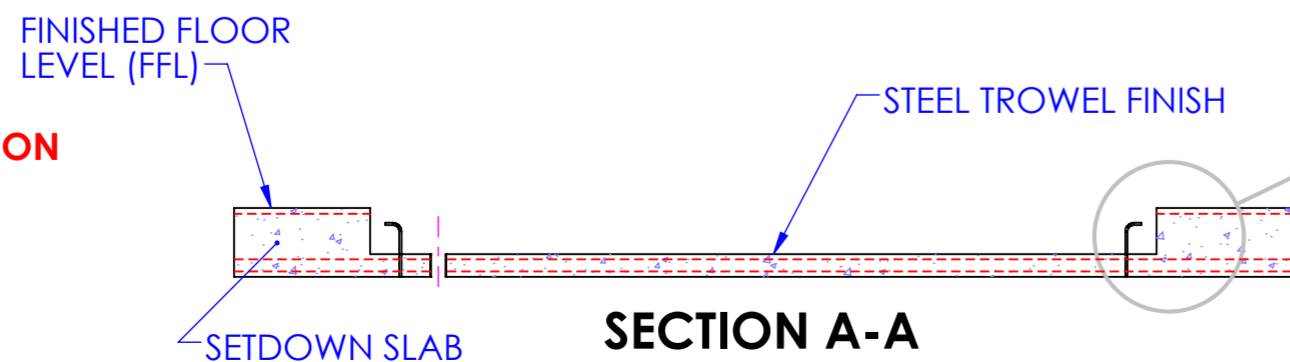
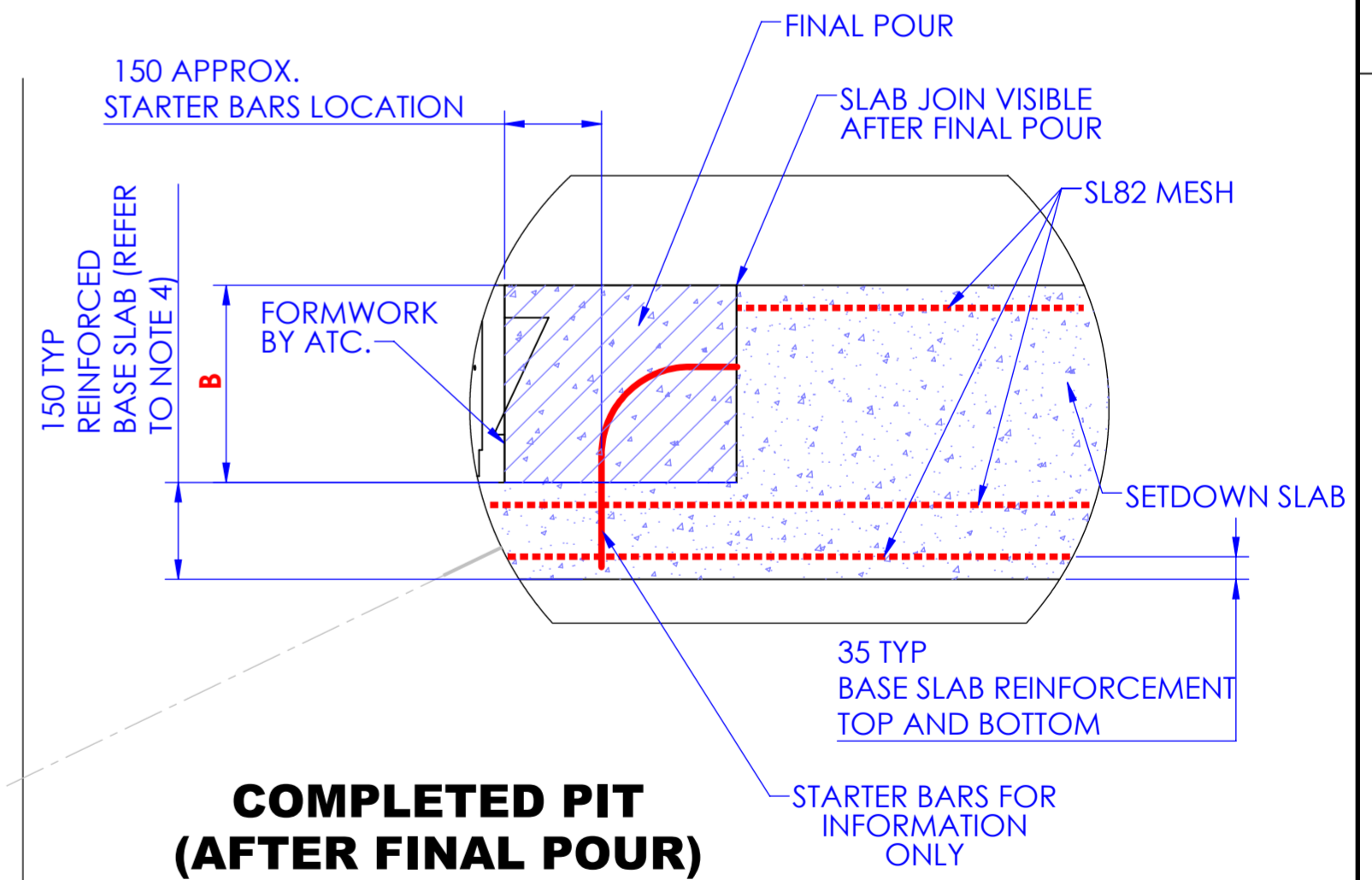
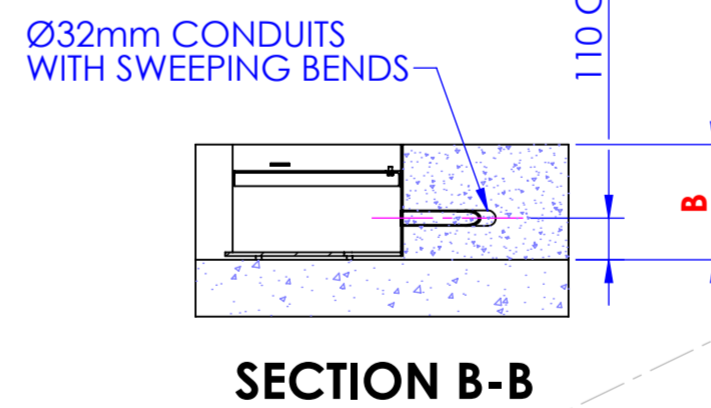
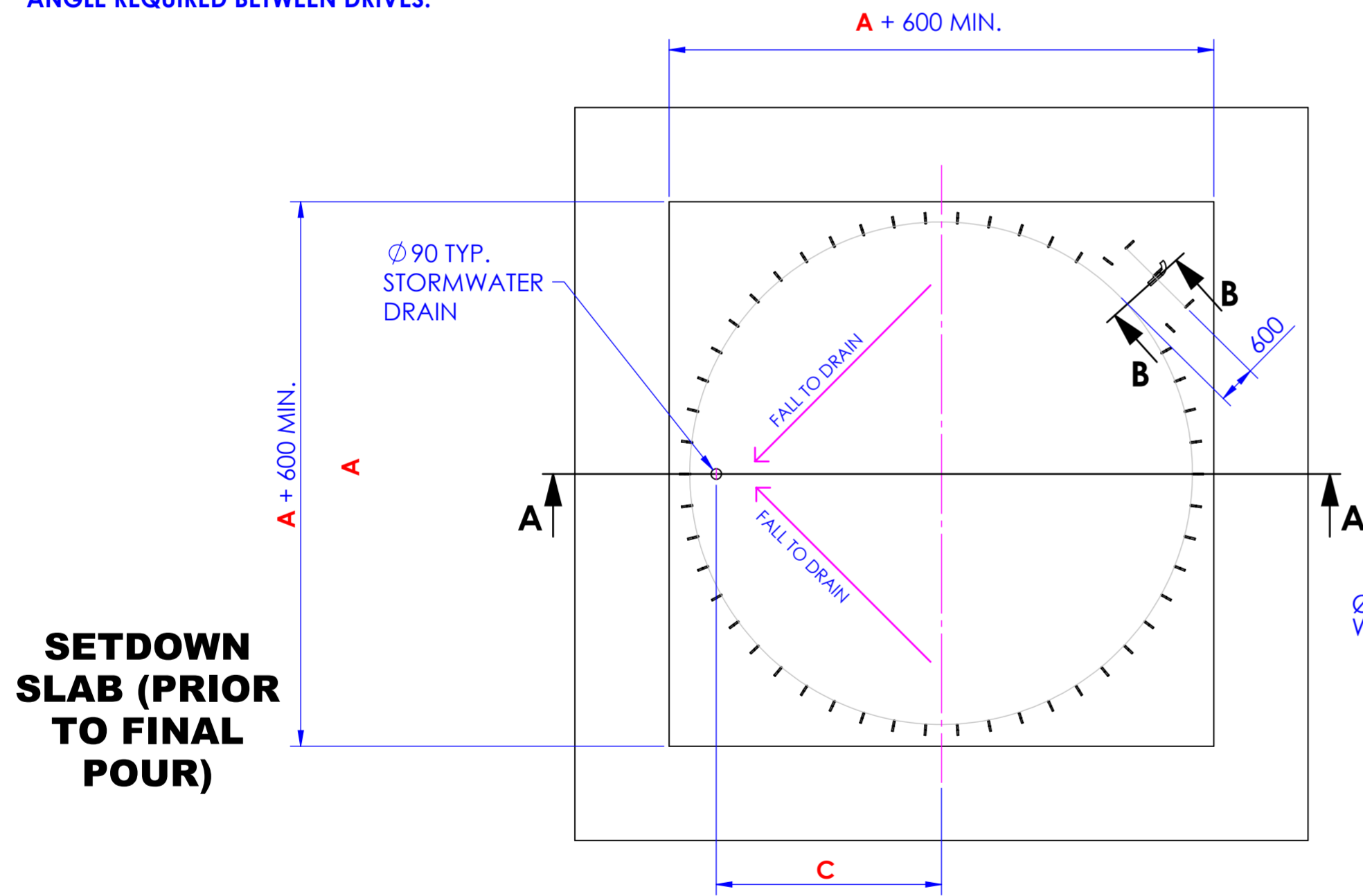
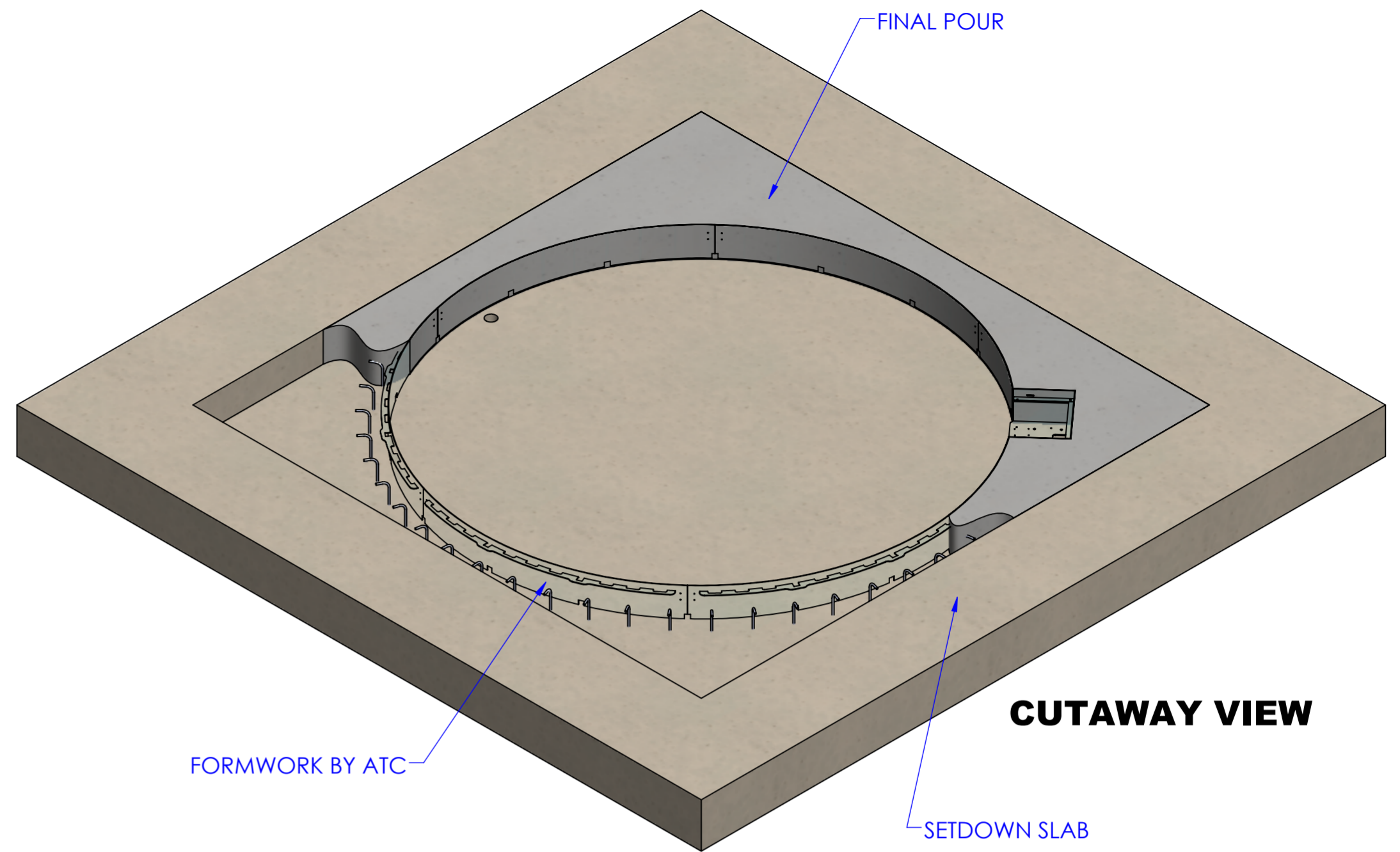
CTX PIT REQUIREMENTS		Size	Drawing No.	Rev.
		A2	D00029	B
Weight	0.000 kg	Scale	1:40	Sheet 1 of 3

PIT OPTION 2 - SETDOWN SLAB

NOTES

1. THE OVERALL SIZE AND SHAPE OF THE SETDOWN SLAB MAY BE ADJUSTED TO SUIT THE INSTALLATION SITE. THE DIMENSIONS SHOWN HERE ARE THE MINIMUM REQUIREMENTS FOR THE SETDOWN AREA OF THE SLAB.
2. IF DRIVE IS TO BE LOCATED PARALLEL TO ONE OF THE SIDES (IE NOT AT 45° AS SHOWN) THEN THE PIT WITH IN THE DIRECTION OF THE DRIVE MUST BE INCREASED BY 450mm.
3. THE ANGLE OF THE DRAIN FROM THE CENTRE OF THE PIT IS NOT IMPORTANT, THE DRAIN CAN BE LOCATED ANYWHERE AROUND THE PIT BUT NEEDS TO BE AT THE SPECIFIED DIMENSION FROM THE CENTRE OF THE PIT. IF THE BLIND SLAB IS ON A SLOPE THEN THE DRAIN IS TO BE POSITIONED AT THE ANGLE OF THE LOWEST POINT.
4. IT IS THE CLIENTS RESPONSIBILITY TO ENSURE THE GENERAL SPECIFICATIONS PROVIDED HERE ARE SUITABLE TO THEIR SPECIFIC SITE REQUIREMENTS INCLUDING LOCAL LEGAL REQUIREMENTS.
5. CONCRETE TO BE POURED AT LEAST 7 DAYS PRIOR TO FORMWORK INSTALLATION.
6. PACK TURNABLE GAP WITH ABLE FLEX WHEN POURING CONCRETE IN AND AROUND TURNTABLE.
7. FOR PAVER RISER TURNABLES ONLY:
 1. NO ACCELERANTS TO BE ADDED TO CONCRETE. RAPID SETTING DUE TO USE OF ACCELERANTS IS LIKELY TO CAUSE DISTORTION OF THE TURNABLE SURFACE.
 2. NO TYING OFF REINFORCING IN TURNABLE FILL TO TURNABLE STRUCTURE.

REFER TO DOCUMENT E00021 FOR GUIDANCE ON SLAB SELECTION AND THE TURNABLE INSTALLATION PROCESS.
FOR DUAL DRIVE TURNABLES, REFER TO THE TECHNICAL SPECIFICATION DOCUMENT FOR THE ANGLE REQUIRED BETWEEN DRIVES.



REFER TO TECHNICAL SPECIFICATION DOCUMENT FOR DIMENSIONS.

A = TURNTABLE DIAMETER
B = SLAB DEPTH
C = DRAIN RADIUS

B	26/04/2023	INFORMATION UPDATE	PA	
A	06/02/2023	ISSUED FOR MANUFACTURE	PA	-
REV	DATE	REVISION DESCRIPTION	DRN	ECN

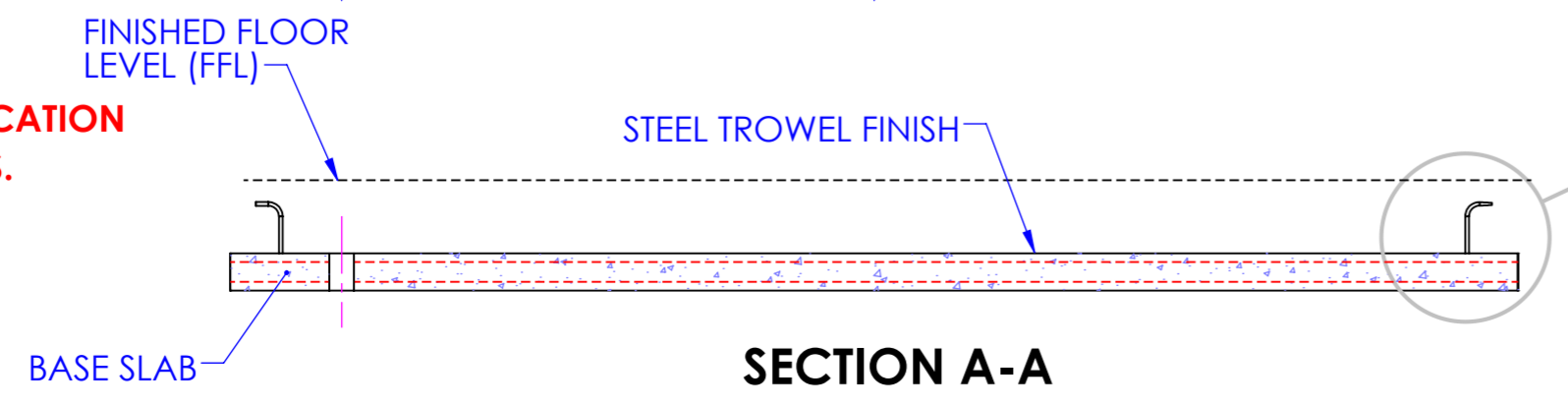
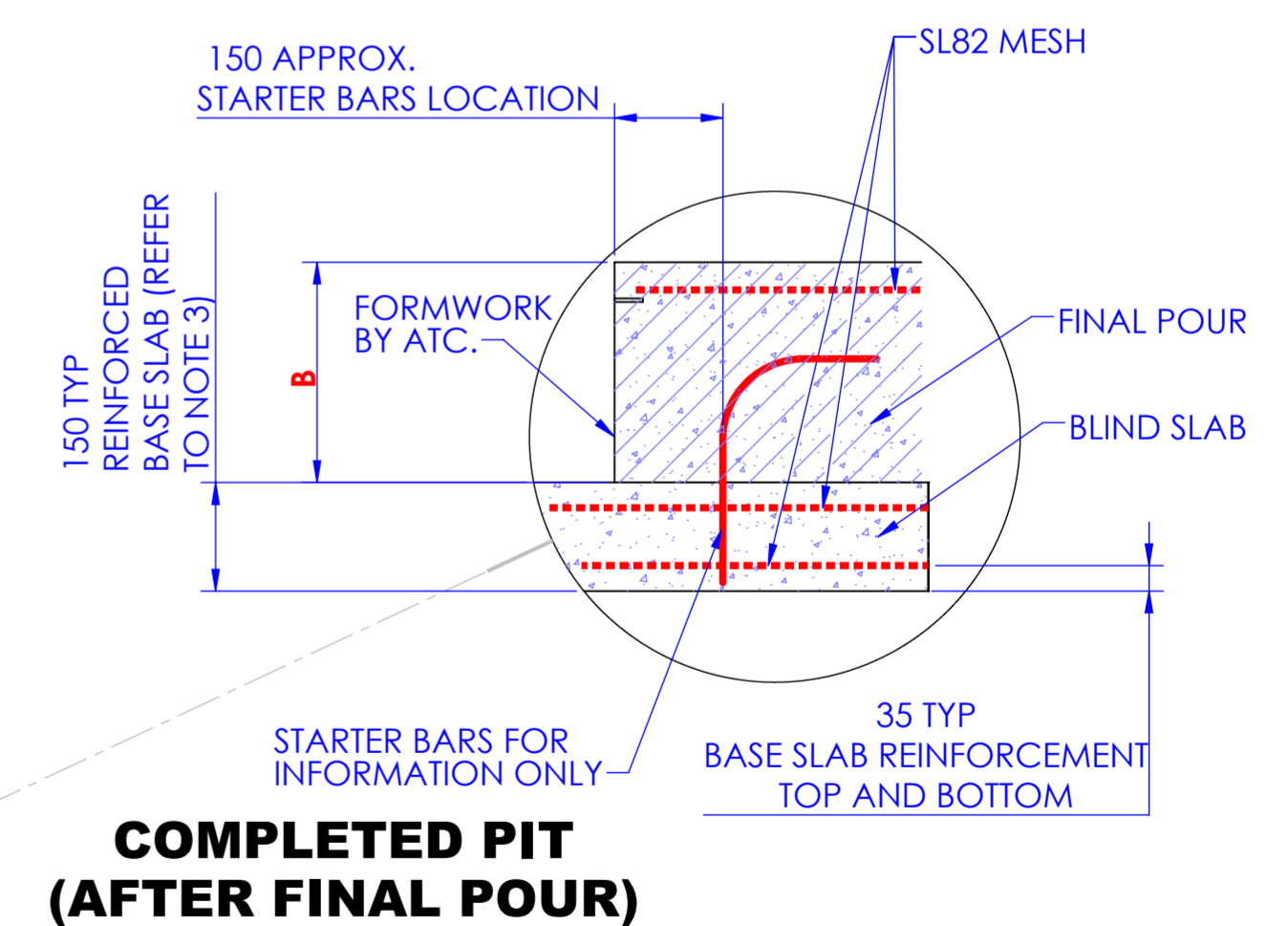
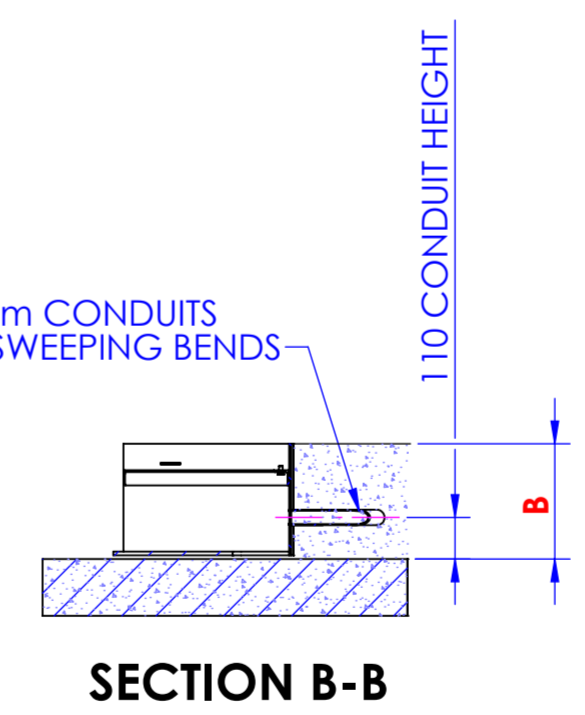
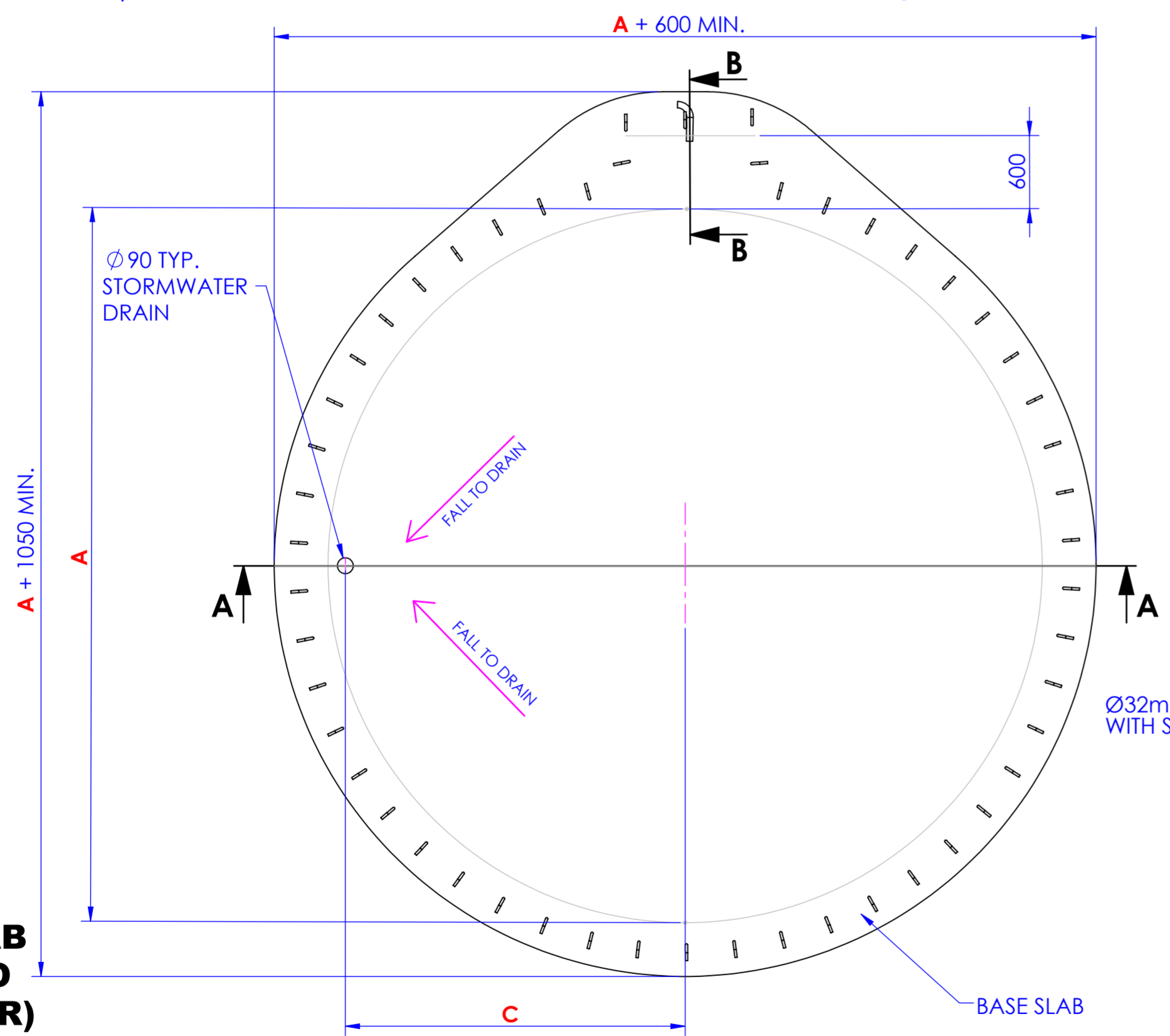
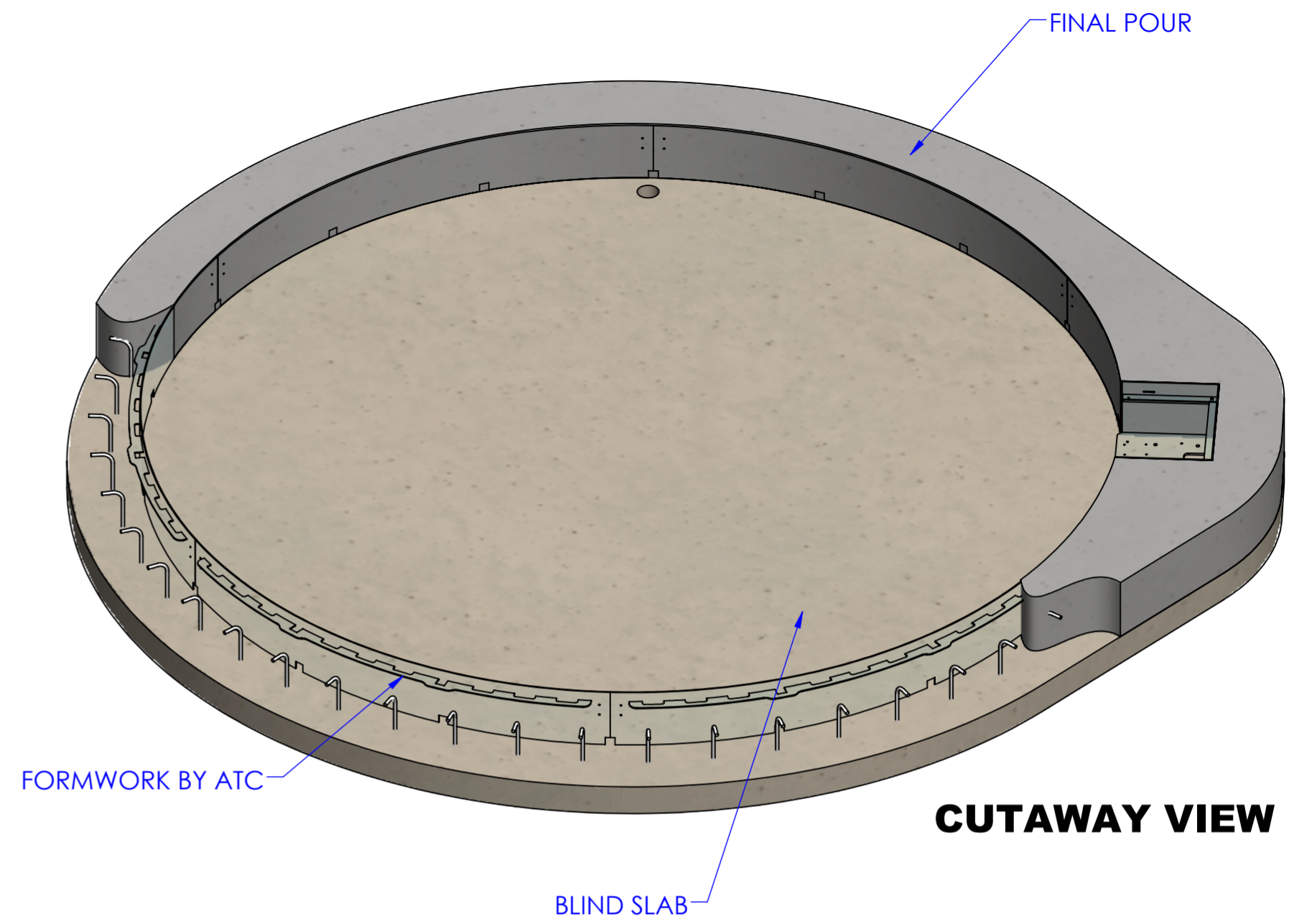
<p>3RD ANGLE PROJECTION DRAWING TO AS1100 IF IN DOUBT ASK</p> <p><small>DIMENSIONS IN mm U.N.O. TOLERANCES U.N.O. • FABRICATED PARTS: ± 2mm • MACHINED PARTS: ± 0.1mm • ANGULAR: $\pm 0.5^\circ$</small></p> <p>DEBURR AND BREAK ALL SHARP EDGES</p>	<p>61 Collins Street Kangaroo Flat VIC 3555 Australia +61 3 5447 0525 w.turntables.com.au</p>		<p>CTX PIT REQUIREMENTS</p>	
	<p>Drawn: PA Date: 06/02/2023 Material:</p> <p>Designed: PA Date: Finish:</p> <p>Approved: Date:</p>	<p>Size: A2</p> <p>Weight: 0.000 kg</p>	<p>Drawing No.: D00029</p> <p>Scale: 1:50</p>	<p>Rev.: B</p> <p>Sheet: 2 of 3</p>

PIT OPTION 3 - MINIMAL BLIND SLAB

NOTES

1. THE OVERALL SIZE AND SHAPE OF THE MINIMAL BLIND SLAB MAY BE INCREASED TO SUIT THE INSTALLATION SITE. THE DIMENSIONS SHOWN HERE ARE THE MINIMUM REQUIREMENTS FOR THE SLAB.
2. THE ANGLE OF THE DRAIN FROM THE CENTRE OF THE PIT IS NOT IMPORTANT, THE DRAIN CAN BE LOCATED ANYWHERE AROUND THE PIT BUT NEEDS TO BE AT THE SPECIFIED DIMENSION FROM THE CENTRE OF THE PIT. IF THE BLIND SLAB IS ON A SLOPE THEN THE DRAIN IS TO BE POSITIONED AT THE ANGLE OF THE LOWEST POINT.
3. IT IS THE CLIENTS RESPONSIBILITY TO ENSURE THE GENERAL SPECIFICATIONS PROVIDED HERE ARE SUITABLE TO THEIR SPECIFIC SITE REQUIREMENTS INCLUDING LOCAL LEGAL REQUIREMENTS.
4. CONCRETE TO BE POURED AT LEAST 7 DAYS PRIOR TO FORMWORK INSTALLATION.
5. PACK TURNABLE GAP WITH ABL FLEX WHEN POURING CONCRETE IN AND AROUND TURNABLE.
6. FOR PAVER RISER TURNABLES ONLY:
 1. NO ACCELERANTS TO BE ADDED TO CONCRETE. RAPID SETTING DUE TO USE OF ACCELERANTS IS LIKELY TO CAUSE DISTORTION OF THE TURNABLE SURFACE.
 2. NO TYING OFF REINFORCING IN TURNABLE FILL TO TURNABLE STRUCTURE.

REFER TO DOCUMENT E00021 FOR GUIDANCE ON SLAB SELECTION AND THE TURNABLE INSTALLATION PROCESS.
FOR DUAL DRIVE TURNABLES, REFER TO THE TECHNICAL SPECIFICATION DOCUMENT FOR THE ANGLE REQUIRED BETWEEN DRIVES.



REFER TO TECHNICAL SPECIFICATION DOCUMENT FOR DIMENSIONS.

A = TURNABLE DIAMETER
B = SLAB DEPTH
C = DRAIN RADIUS

REV	DATE	REVISION DESCRIPTION	DRN	ECN
B	26/04/2023	INFORMATION UPDATE	PA	-
A	06/02/2023	ISSUED FOR MANUFACTURE	PA	-

<p>3RD ANGLE PROJECTION DRAWING TO AS1100 IF IN DOUBT ASK</p> <p><small>DIMENSIONS IN mm U.N.O. TOLERANCES U.N.O. • FABRICATED PARTS: ± 2mm • MACHINED PARTS: ± 0.1mm • ANGULAR: $\pm 0.5^\circ$</small></p> <p>DEBURR AND BREAK ALL SHARP EDGES</p>	<p>61 Collins Street Kangaroo Flat VIC 3555 Australia +61 3 5447 0525 w.turntables.com.au</p>	<p>CTX PIT REQUIREMENTS</p>		
		<p>Drawn: PA Date: 06/02/2023 Material:</p> <p>Designed: PA Date: Finish:</p> <p>Approved: Date:</p>	<p>Size: A2</p> <p>Weight: 0.000 kg</p>	<p>Drawing No.: D00029</p> <p>Scale: 1:30</p>