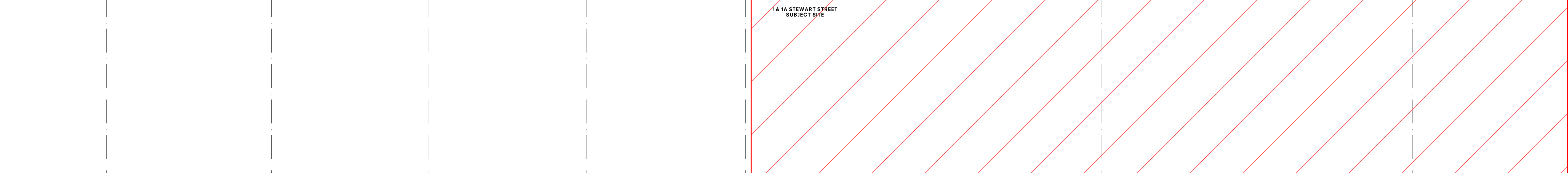
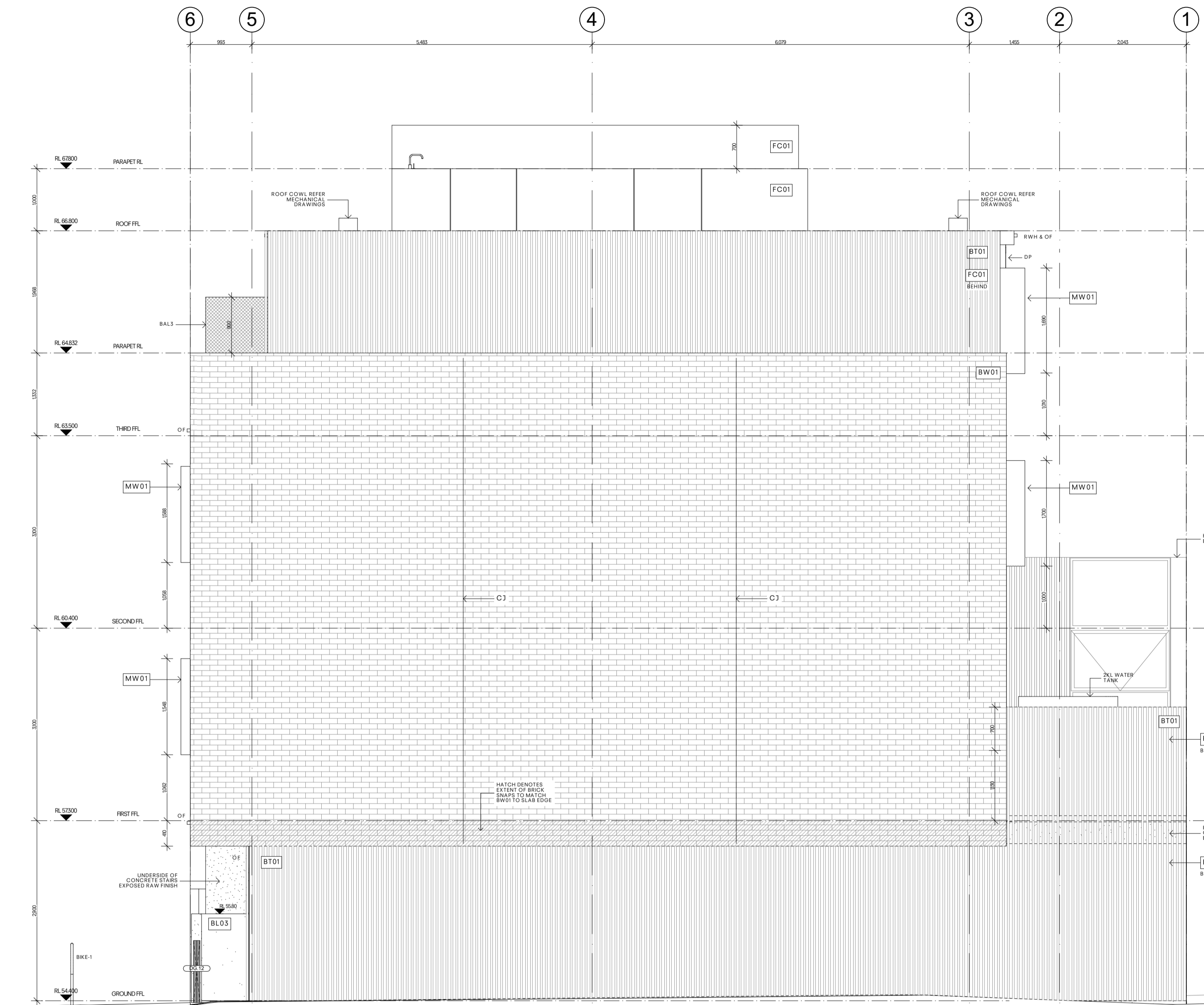


NOT PART OF STAGE 2 OF WORKS

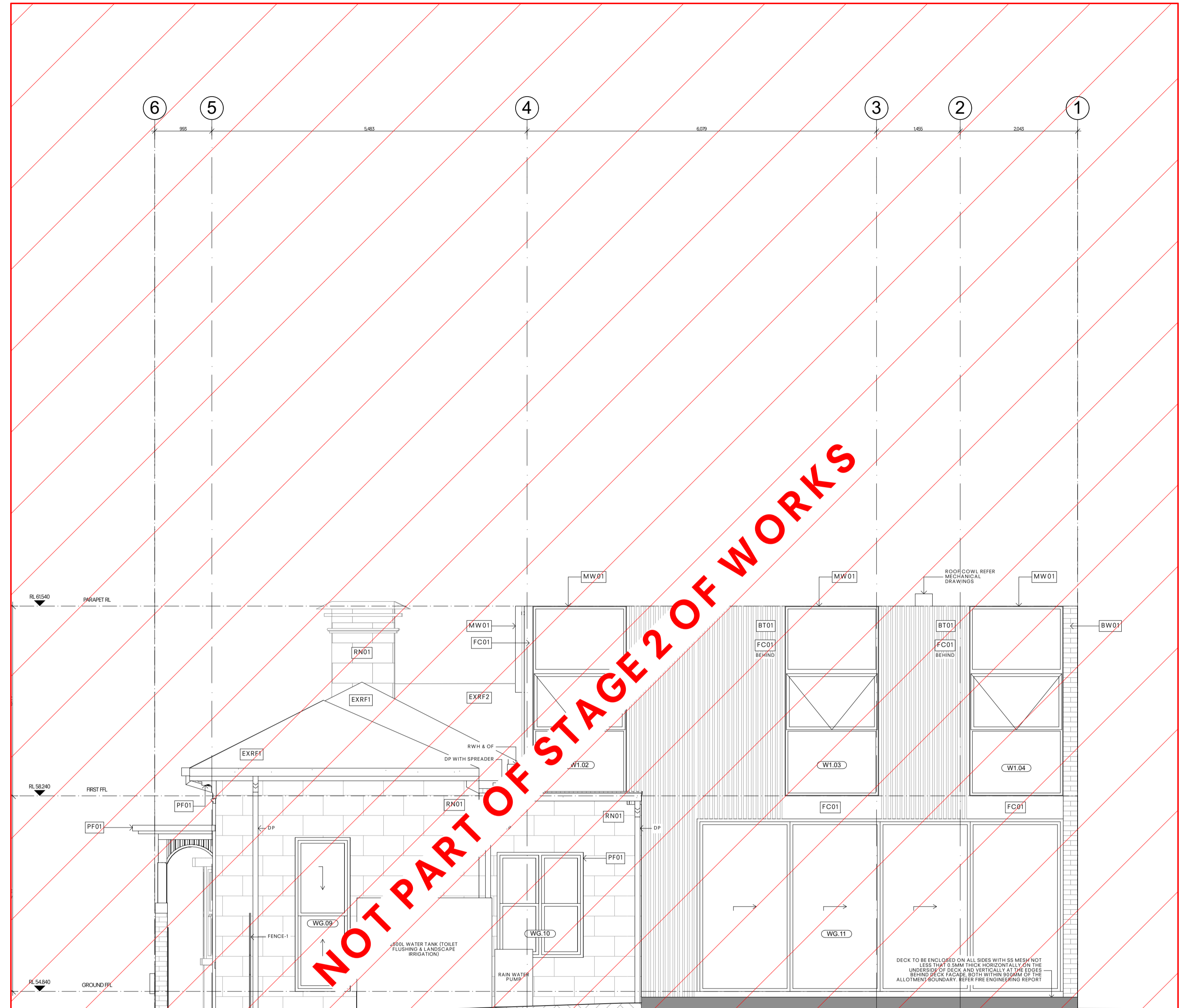
1 & 1A STEWART STREET
SUBJECT SITE



NOTES		INTERNAL FLOOR FINISHES		INTERNAL FLOOR FINISHES		WALL CONSTRUCTION		W203 BLOCK & BRICK VENEER WALL		W208 FC SHEET CLAD WALL		W210 FC SHEET CLAD WALL (BOTH SIDES)		W212 BLOCK & BRICK VENEER WALL		W213 BLOCK & BRICK VENEER WALL		W214 PARTY WALL		W215 PARTY WALL		W216 PARTY WALL		W217 PARTY WALL		W218 PARTY WALL		W219 PARTY WALL		W220 PARTY WALL		W221 PARTY WALL		W222 PARTY WALL		W223 PARTY WALL		W224 PARTY WALL		W225 PARTY WALL		W226 PARTY WALL		W227 PARTY WALL		W228 PARTY WALL		W229 PARTY WALL		W230 PARTY WALL		W231 PARTY WALL		W232 PARTY WALL		W233 PARTY WALL		W234 PARTY WALL		W235 PARTY WALL		W236 PARTY WALL		W237 PARTY WALL		W238 PARTY WALL		W239 PARTY WALL		W240 PARTY WALL		W241 PARTY WALL		W242 PARTY WALL		W243 PARTY WALL		W244 PARTY WALL		W245 PARTY WALL		W246 PARTY WALL		W247 PARTY WALL		W248 PARTY WALL		W249 PARTY WALL		W250 PARTY WALL		W251 PARTY WALL		W252 PARTY WALL		W253 PARTY WALL		W254 PARTY WALL		W255 PARTY WALL		W256 PARTY WALL		W257 PARTY WALL		W258 PARTY WALL		W259 PARTY WALL		W260 PARTY WALL		W261 PARTY WALL		W262 PARTY WALL		W263 PARTY WALL		W264 PARTY WALL		W265 PARTY WALL		W266 PARTY WALL		W267 PARTY WALL		W268 PARTY WALL		W269 PARTY WALL		W270 PARTY WALL		W271 PARTY WALL		W272 PARTY WALL		W273 PARTY WALL		W274 PARTY WALL		W275 PARTY WALL		W276 PARTY WALL		W277 PARTY WALL		W278 PARTY WALL		W279 PARTY WALL		W280 PARTY WALL		W281 PARTY WALL		W282 PARTY WALL		W283 PARTY WALL		W284 PARTY WALL		W285 PARTY WALL		W286 PARTY WALL		W287 PARTY WALL		W288 PARTY WALL		W289 PARTY WALL		W290 PARTY WALL		W291 PARTY WALL		W292 PARTY WALL		W293 PARTY WALL		W294 PARTY WALL		W295 PARTY WALL		W296 PARTY WALL		W297 PARTY WALL		W298 PARTY WALL		W299 PARTY WALL		W300 PARTY WALL	
1	2	3	4	5	6	7	8	9	10	11	12	13	14	15	16	17	18	19	20	21	22	23	24	25	26	27	28	29	30	31	32	33	34	35	36	37	38	39	40	41	42	43	44	45	46	47	48	49	50	51	52	53	54	55	56	57	58	59	60	61	62	63	64	65	66	67	68	69	70	71	72	73	74	75	76	77	78	79	80	81	82	83	84	85	86	87	88	89	90	91	92	93	94	95	96	97	98	99	100																																																																																												



1 & 1A STEWART STREET
SUBJECT SITE



NOT PART OF STAGE 2 OF WORKS

1 & 1A STEWART STREET
SUBJECT SITE

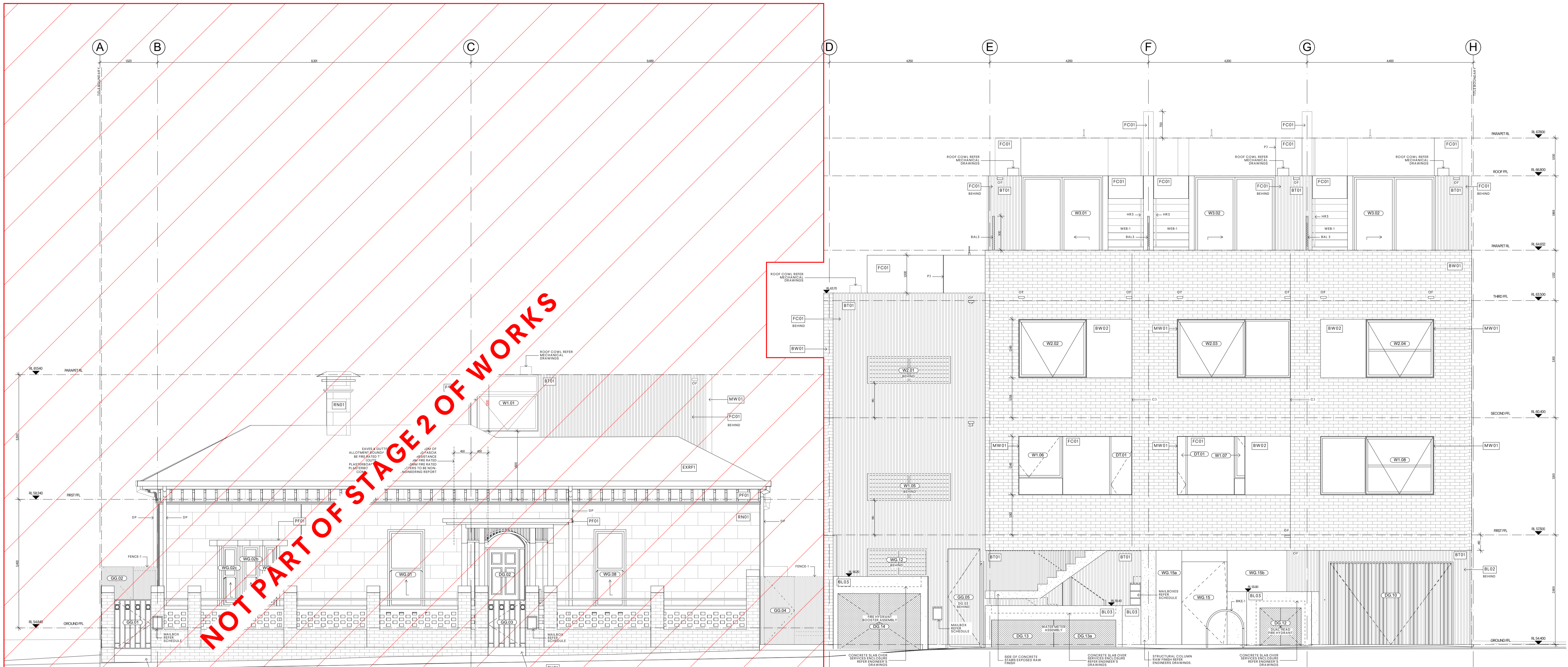
EAST ELEVATION
SCALE 1:50@A1

INTERNAL EAST ELEVATION
SCALE 1:50@A1

NOTES	INTERNAL FLOOR FINISHES	WALL CONSTRUCTION	WTF03 BLOCK & BRICK VENER WALL	WTF04 SHEET CLAD WALL	WTF05 BLOCK & BRICK VENER WALL	FLOOR TYPES	F2 CONCRETE FLOOR BTW UNITS AND GARAGE (TILE FINISH)	F3 TIMBER JOISTS FLOOR (BTW UNIT/ CARPET FINISH)	F4 STEEL FRAMED STAIRS (TERRACE)
<p>NOTE: REFER TO SPECIFICATION, SECTION 9.1 FOR FURTHER INFORMATION ON THE FINISHES AND MATERIALS TO BE USED.</p> <p>NOTE: REFER TO SPECIFICATION, SECTION 9.2 FOR FURTHER INFORMATION ON THE FINISHES AND MATERIALS TO BE USED.</p> <p>NOTE: REFER TO SPECIFICATION, SECTION 9.3 FOR FURTHER INFORMATION ON THE FINISHES AND MATERIALS TO BE USED.</p>	<p>CM01 GRIND FINISH WITH CLEAR MATT NON-SLIP ADHESIVE</p> <p>CM02 POLISHED CONCRETE</p> <p>CM03 SOLID TIMBER STAR TREADS WITH NON-SLIP FINISH</p>	<p>WTF01 RECYCLED FACE BRICK WITH PAINT FINISH</p> <p>WTF02 RECYCLED FACE BRICK WITH PAINT FINISH</p> <p>WTF03 SOLID TIMBER STAR TREADS WITH NON-SLIP FINISH</p>	<p>WTF03 BLOCK & BRICK VENER WALL</p> <p>WTF04 SHEET CLAD WALL</p> <p>WTF05 BLOCK & BRICK VENER WALL</p>	<p>WTF06 SHEET CLAD WALL</p> <p>WTF07 SHEET CLAD WALL</p> <p>WTF08 SHEET CLAD WALL</p>	<p>WTF09 BLOCK & BRICK VENER WALL</p> <p>WTF10 BLOCK & BRICK VENER WALL</p> <p>WTF11 BLOCK & BRICK VENER WALL</p>	<p>F1 CONCRETE SLAB ON GROUND</p> <p>F2 CONCRETE SLAB ON GROUND (TILE FINISH)</p> <p>F3 CONCRETE SLAB ON GROUND (TIMBER DECKING)</p> <p>F4 CONCRETE FLOOR (COMMON)</p>	<p>F5 CONCRETE FLOOR BTW UNITS AND GARAGE (TILE FINISH)</p> <p>F6 CONCRETE FLOOR (TIMBER DECKING)</p> <p>F7 CONCRETE FLOOR (COMMON)</p>	<p>F8 TIMBER JOISTS FLOOR (BTW UNIT/ CARPET FINISH)</p> <p>F9 TIMBER JOISTS FLOOR (BTW ROOF TERRACE AND UNITS)</p> <p>F10 TIMBER JOISTS FLOOR (BTW UNITS & COMMON AREA)</p>	<p>F11 STEEL FRAMED STAIRS (TERRACE)</p> <p>F12 STEEL FRAMED STAIRS (TERRACE)</p> <p>F13 STEEL FRAMED STAIRS (TERRACE)</p>

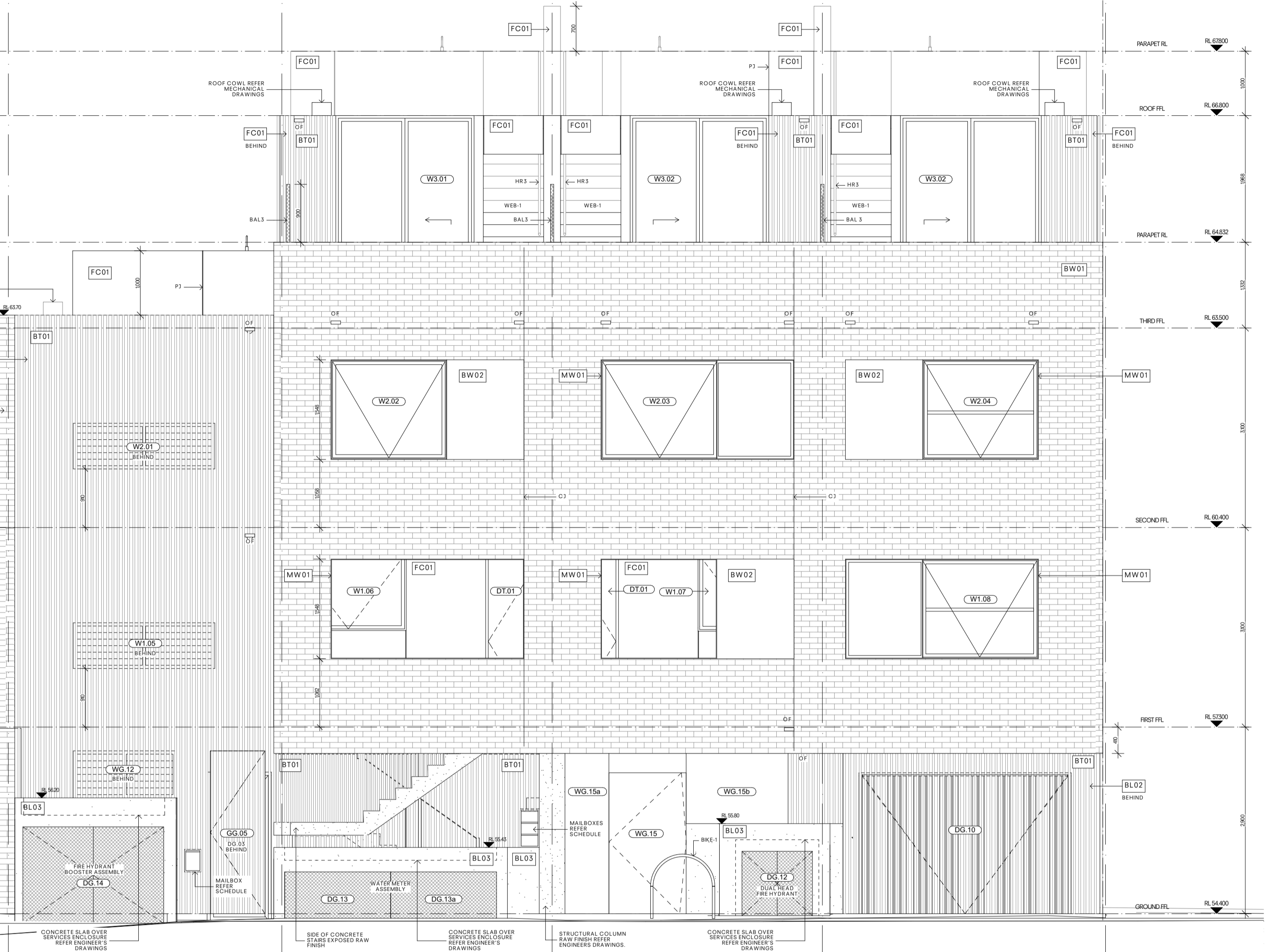
WTF03 BLOCK & BRICK VENER WALL	WTF04 SHEET CLAD WALL	WTF05 BLOCK & BRICK VENER WALL	FLOOR TYPES	F2 CONCRETE FLOOR BTW UNITS AND GARAGE (TILE FINISH)	F3 TIMBER JOISTS FLOOR (BTW UNIT/ CARPET FINISH)	F4 STEEL FRAMED STAIRS (TERRACE)
<p>WTF03 BLOCK & BRICK VENER WALL</p> <p>WTF04 SHEET CLAD WALL</p> <p>WTF05 BLOCK & BRICK VENER WALL</p>	<p>WTF06 SHEET CLAD WALL</p> <p>WTF07 SHEET CLAD WALL</p> <p>WTF08 SHEET CLAD WALL</p>	<p>WTF09 BLOCK & BRICK VENER WALL</p> <p>WTF10 BLOCK & BRICK VENER WALL</p> <p>WTF11 BLOCK & BRICK VENER WALL</p>	<p>F1 CONCRETE SLAB ON GROUND</p> <p>F2 CONCRETE SLAB ON GROUND (TILE FINISH)</p> <p>F3 CONCRETE SLAB ON GROUND (TIMBER DECKING)</p> <p>F4 CONCRETE FLOOR (COMMON)</p>	<p>F5 CONCRETE FLOOR BTW UNITS AND GARAGE (TILE FINISH)</p> <p>F6 CONCRETE FLOOR (TIMBER DECKING)</p> <p>F7 CONCRETE FLOOR (COMMON)</p>	<p>F8 TIMBER JOISTS FLOOR (BTW UNIT/ CARPET FINISH)</p> <p>F9 TIMBER JOISTS FLOOR (BTW ROOF TERRACE AND UNITS)</p> <p>F10 TIMBER JOISTS FLOOR (BTW UNITS & COMMON AREA)</p>	<p>F11 STEEL FRAMED STAIRS (TERRACE)</p> <p>F12 STEEL FRAMED STAIRS (TERRACE)</p> <p>F13 STEEL FRAMED STAIRS (TERRACE)</p>

FOR CONSTRUCTION



NOT PART OF STAGE 2 OF WORKS

1 & 1A STEWART STREET
SUBJECT SITE



SOUTH ELEVATION
SCALE 1:50@A1

<p>NOTES</p> <p>1. CLADDING TO COMPLY WITH AS288-2006 AND AS2047-2004 WATERPROOFING TO COMPLY WITH AS4200-2005 ROOF OUTLET SUMP TO FORM A TRAP TO PREVENT BACKFLOW OF WATER TO THE ROOF DRAINAGE TO AS3003.3 & THE DESIGN AND CONSTRUCTION IS THE RESPONSIBILITY OF THE CONTRACTOR.</p> <p>2. METAL SHEET SOUP CLADDING TO BE DESIGNED AND INSTALLED IN ACCORDANCE WITH AS1562-2009.</p> <p>3. THE WALLS SHALL BE CONSTRUCTED TO BE SUBSTANTIALLY ABOVE FINISH LEVEL TO ALLOW FOR THE CONSTRUCTION OF A RAINFALL DRAINAGE SYSTEM TO BE INSTALLED TO THE EXTERIOR OF THE BUILDING TO PREVENT WATER FROM PENETRATING THE WALLS.</p> <p>4. ALL ROOFING TO BE CONSTRUCTED IN ACCORDANCE WITH AS1562-2009.</p> <p>5. ALL ROOFING TO BE CONSTRUCTED IN ACCORDANCE WITH AS1562-2009.</p> <p>6. ALL ROOFING TO BE CONSTRUCTED IN ACCORDANCE WITH AS1562-2009.</p> <p>7. ALL ROOFING TO BE CONSTRUCTED IN ACCORDANCE WITH AS1562-2009.</p> <p>8. ALL ROOFING TO BE CONSTRUCTED IN ACCORDANCE WITH AS1562-2009.</p> <p>9. ALL ROOFING TO BE CONSTRUCTED IN ACCORDANCE WITH AS1562-2009.</p> <p>10. ALL ROOFING TO BE CONSTRUCTED IN ACCORDANCE WITH AS1562-2009.</p>	<p>EXTERNAL FLOOR FINISHES</p> <p>CN03 GRIND FINISH WITH CLEAR MATT NON-SLIP ADHESIVE SEAL (DUTY COAT) WITH POLYURETHANE FINISH</p> <p>INTERNAL WALL FINISHES</p> <p>SW01 RECYCLED FACE BRICK WITH SANDER FINISH</p> <p>SW02 RECYCLED FACE BRICK WITH SANDER FINISH</p> <p>SW03 RECYCLED FACE BRICK WITH SANDER FINISH</p> <p>SW04 RECYCLED FACE BRICK WITH SANDER FINISH</p> <p>SW05 RECYCLED FACE BRICK WITH SANDER FINISH</p> <p>SW06 RECYCLED FACE BRICK WITH SANDER FINISH</p> <p>SW07 RECYCLED FACE BRICK WITH SANDER FINISH</p> <p>SW08 RECYCLED FACE BRICK WITH SANDER FINISH</p> <p>SW09 RECYCLED FACE BRICK WITH SANDER FINISH</p> <p>SW10 RECYCLED FACE BRICK WITH SANDER FINISH</p> <p>SW11 RECYCLED FACE BRICK WITH SANDER FINISH</p> <p>SW12 RECYCLED FACE BRICK WITH SANDER FINISH</p> <p>SW13 RECYCLED FACE BRICK WITH SANDER FINISH</p> <p>SW14 RECYCLED FACE BRICK WITH SANDER FINISH</p> <p>SW15 RECYCLED FACE BRICK WITH SANDER FINISH</p> <p>SW16 RECYCLED FACE BRICK WITH SANDER FINISH</p> <p>SW17 RECYCLED FACE BRICK WITH SANDER FINISH</p> <p>SW18 RECYCLED FACE BRICK WITH SANDER FINISH</p> <p>SW19 RECYCLED FACE BRICK WITH SANDER FINISH</p> <p>SW20 RECYCLED FACE BRICK WITH SANDER FINISH</p> <p>SW21 RECYCLED FACE BRICK WITH SANDER FINISH</p> <p>SW22 RECYCLED FACE BRICK WITH SANDER FINISH</p> <p>SW23 RECYCLED FACE BRICK WITH SANDER FINISH</p> <p>SW24 RECYCLED FACE BRICK WITH SANDER FINISH</p> <p>SW25 RECYCLED FACE BRICK WITH SANDER FINISH</p> <p>SW26 RECYCLED FACE BRICK WITH SANDER FINISH</p> <p>SW27 RECYCLED FACE BRICK WITH SANDER FINISH</p> <p>SW28 RECYCLED FACE BRICK WITH SANDER FINISH</p> <p>SW29 RECYCLED FACE BRICK WITH SANDER FINISH</p> <p>SW30 RECYCLED FACE BRICK WITH SANDER FINISH</p>	<p>INTERNAL FLOOR FINISHES</p> <p>CN01 GRIND FINISH WITH CLEAR MATT NON-SLIP ADHESIVE SEAL (DUTY COAT) WITH POLYURETHANE FINISH</p> <p>CN02 GRIND FINISH WITH CLEAR MATT NON-SLIP ADHESIVE SEAL (DUTY COAT) WITH POLYURETHANE FINISH</p> <p>CN03 GRIND FINISH WITH CLEAR MATT NON-SLIP ADHESIVE SEAL (DUTY COAT) WITH POLYURETHANE FINISH</p> <p>CN04 GRIND FINISH WITH CLEAR MATT NON-SLIP ADHESIVE SEAL (DUTY COAT) WITH POLYURETHANE FINISH</p> <p>CN05 GRIND FINISH WITH CLEAR MATT NON-SLIP ADHESIVE SEAL (DUTY COAT) WITH POLYURETHANE FINISH</p> <p>CN06 GRIND FINISH WITH CLEAR MATT NON-SLIP ADHESIVE SEAL (DUTY COAT) WITH POLYURETHANE FINISH</p> <p>CN07 GRIND FINISH WITH CLEAR MATT NON-SLIP ADHESIVE SEAL (DUTY COAT) WITH POLYURETHANE FINISH</p> <p>CN08 GRIND FINISH WITH CLEAR MATT NON-SLIP ADHESIVE SEAL (DUTY COAT) WITH POLYURETHANE FINISH</p> <p>CN09 GRIND FINISH WITH CLEAR MATT NON-SLIP ADHESIVE SEAL (DUTY COAT) WITH POLYURETHANE FINISH</p> <p>CN10 GRIND FINISH WITH CLEAR MATT NON-SLIP ADHESIVE SEAL (DUTY COAT) WITH POLYURETHANE FINISH</p> <p>CN11 GRIND FINISH WITH CLEAR MATT NON-SLIP ADHESIVE SEAL (DUTY COAT) WITH POLYURETHANE FINISH</p> <p>CN12 GRIND FINISH WITH CLEAR MATT NON-SLIP ADHESIVE SEAL (DUTY COAT) WITH POLYURETHANE FINISH</p> <p>CN13 GRIND FINISH WITH CLEAR MATT NON-SLIP ADHESIVE SEAL (DUTY COAT) WITH POLYURETHANE FINISH</p> <p>CN14 GRIND FINISH WITH CLEAR MATT NON-SLIP ADHESIVE SEAL (DUTY COAT) WITH POLYURETHANE FINISH</p> <p>CN15 GRIND FINISH WITH CLEAR MATT NON-SLIP ADHESIVE SEAL (DUTY COAT) WITH POLYURETHANE FINISH</p> <p>CN16 GRIND FINISH WITH CLEAR MATT NON-SLIP ADHESIVE SEAL (DUTY COAT) WITH POLYURETHANE FINISH</p> <p>CN17 GRIND FINISH WITH CLEAR MATT NON-SLIP ADHESIVE SEAL (DUTY COAT) WITH POLYURETHANE FINISH</p> <p>CN18 GRIND FINISH WITH CLEAR MATT NON-SLIP ADHESIVE SEAL (DUTY COAT) WITH POLYURETHANE FINISH</p> <p>CN19 GRIND FINISH WITH CLEAR MATT NON-SLIP ADHESIVE SEAL (DUTY COAT) WITH POLYURETHANE FINISH</p> <p>CN20 GRIND FINISH WITH CLEAR MATT NON-SLIP ADHESIVE SEAL (DUTY COAT) WITH POLYURETHANE FINISH</p>	<p>WALL CONSTRUCTION</p> <p>NOTE: REFER TO THE SPECIFICATION (SCA SECTION 9) FOR WALL CONSTRUCTION DETAILS.</p> <p>W001 100MM THICK FACE BRICKWORK WALL NOM. 40 CAVITY & REFLECTIVE FOIL SARKING FOLLOWED BY 100MM THICK CORE FILL BLOCKWORK WALL REFER STRUCTURAL DRAWINGS.</p> <p>W002 100MM THICK FACE BRICKWORK WALL NOM. 40 CAVITY & REFLECTIVE FOIL SARKING FOLLOWED BY 100MM THICK CORE FILL BLOCKWORK WALL REFER STRUCTURAL DRAWINGS.</p> <p>W003 100MM THICK FACE BRICKWORK WALL NOM. 40 CAVITY & REFLECTIVE FOIL SARKING FOLLOWED BY 100MM THICK CORE FILL BLOCKWORK WALL REFER STRUCTURAL DRAWINGS.</p> <p>W004 100MM THICK FACE BRICKWORK WALL NOM. 40 CAVITY & REFLECTIVE FOIL SARKING FOLLOWED BY 100MM THICK CORE FILL BLOCKWORK WALL REFER STRUCTURAL DRAWINGS.</p> <p>W005 100MM THICK FACE BRICKWORK WALL NOM. 40 CAVITY & REFLECTIVE FOIL SARKING FOLLOWED BY 100MM THICK CORE FILL BLOCKWORK WALL REFER STRUCTURAL DRAWINGS.</p> <p>W006 100MM THICK FACE BRICKWORK WALL NOM. 40 CAVITY & REFLECTIVE FOIL SARKING FOLLOWED BY 100MM THICK CORE FILL BLOCKWORK WALL REFER STRUCTURAL DRAWINGS.</p> <p>W007 100MM THICK FACE BRICKWORK WALL NOM. 40 CAVITY & REFLECTIVE FOIL SARKING FOLLOWED BY 100MM THICK CORE FILL BLOCKWORK WALL REFER STRUCTURAL DRAWINGS.</p> <p>W008 100MM THICK FACE BRICKWORK WALL NOM. 40 CAVITY & REFLECTIVE FOIL SARKING FOLLOWED BY 100MM THICK CORE FILL BLOCKWORK WALL REFER STRUCTURAL DRAWINGS.</p> <p>W009 100MM THICK FACE BRICKWORK WALL NOM. 40 CAVITY & REFLECTIVE FOIL SARKING FOLLOWED BY 100MM THICK CORE FILL BLOCKWORK WALL REFER STRUCTURAL DRAWINGS.</p> <p>W010 100MM THICK FACE BRICKWORK WALL NOM. 40 CAVITY & REFLECTIVE FOIL SARKING FOLLOWED BY 100MM THICK CORE FILL BLOCKWORK WALL REFER STRUCTURAL DRAWINGS.</p>	<p>W003 BLOCK & BRICK VENEER WALL</p> <p>W003 100MM THICK FACE BRICKWORK WALL NOM. 40 CAVITY & REFLECTIVE FOIL SARKING FOLLOWED BY 100MM THICK CORE FILL BLOCKWORK WALL REFER STRUCTURAL DRAWINGS.</p> <p>W004 100MM THICK FACE BRICKWORK WALL NOM. 40 CAVITY & REFLECTIVE FOIL SARKING FOLLOWED BY 100MM THICK CORE FILL BLOCKWORK WALL REFER STRUCTURAL DRAWINGS.</p> <p>W005 100MM THICK FACE BRICKWORK WALL NOM. 40 CAVITY & REFLECTIVE FOIL SARKING FOLLOWED BY 100MM THICK CORE FILL BLOCKWORK WALL REFER STRUCTURAL DRAWINGS.</p> <p>W006 100MM THICK FACE BRICKWORK WALL NOM. 40 CAVITY & REFLECTIVE FOIL SARKING FOLLOWED BY 100MM THICK CORE FILL BLOCKWORK WALL REFER STRUCTURAL DRAWINGS.</p> <p>W007 100MM THICK FACE BRICKWORK WALL NOM. 40 CAVITY & REFLECTIVE FOIL SARKING FOLLOWED BY 100MM THICK CORE FILL BLOCKWORK WALL REFER STRUCTURAL DRAWINGS.</p> <p>W008 100MM THICK FACE BRICKWORK WALL NOM. 40 CAVITY & REFLECTIVE FOIL SARKING FOLLOWED BY 100MM THICK CORE FILL BLOCKWORK WALL REFER STRUCTURAL DRAWINGS.</p> <p>W009 100MM THICK FACE BRICKWORK WALL NOM. 40 CAVITY & REFLECTIVE FOIL SARKING FOLLOWED BY 100MM THICK CORE FILL BLOCKWORK WALL REFER STRUCTURAL DRAWINGS.</p> <p>W010 100MM THICK FACE BRICKWORK WALL NOM. 40 CAVITY & REFLECTIVE FOIL SARKING FOLLOWED BY 100MM THICK CORE FILL BLOCKWORK WALL REFER STRUCTURAL DRAWINGS.</p>	<p>W004 FC SHEET CLAD WALL</p> <p>W004 100MM THICK FACE BRICKWORK WALL NOM. 40 CAVITY & REFLECTIVE FOIL SARKING FOLLOWED BY 100MM THICK CORE FILL BLOCKWORK WALL REFER STRUCTURAL DRAWINGS.</p> <p>W005 100MM THICK FACE BRICKWORK WALL NOM. 40 CAVITY & REFLECTIVE FOIL SARKING FOLLOWED BY 100MM THICK CORE FILL BLOCKWORK WALL REFER STRUCTURAL DRAWINGS.</p> <p>W006 100MM THICK FACE BRICKWORK WALL NOM. 40 CAVITY & REFLECTIVE FOIL SARKING FOLLOWED BY 100MM THICK CORE FILL BLOCKWORK WALL REFER STRUCTURAL DRAWINGS.</p> <p>W007 100MM THICK FACE BRICKWORK WALL NOM. 40 CAVITY & REFLECTIVE FOIL SARKING FOLLOWED BY 100MM THICK CORE FILL BLOCKWORK WALL REFER STRUCTURAL DRAWINGS.</p> <p>W008 100MM THICK FACE BRICKWORK WALL NOM. 40 CAVITY & REFLECTIVE FOIL SARKING FOLLOWED BY 100MM THICK CORE FILL BLOCKWORK WALL REFER STRUCTURAL DRAWINGS.</p> <p>W009 100MM THICK FACE BRICKWORK WALL NOM. 40 CAVITY & REFLECTIVE FOIL SARKING FOLLOWED BY 100MM THICK CORE FILL BLOCKWORK WALL REFER STRUCTURAL DRAWINGS.</p> <p>W010 100MM THICK FACE BRICKWORK WALL NOM. 40 CAVITY & REFLECTIVE FOIL SARKING FOLLOWED BY 100MM THICK CORE FILL BLOCKWORK WALL REFER STRUCTURAL DRAWINGS.</p>	<p>W005 BLOCK & BRICK VENEER WALL</p> <p>W005 100MM THICK FACE BRICKWORK WALL NOM. 40 CAVITY & REFLECTIVE FOIL SARKING FOLLOWED BY 100MM THICK CORE FILL BLOCKWORK WALL REFER STRUCTURAL DRAWINGS.</p> <p>W006 100MM THICK FACE BRICKWORK WALL NOM. 40 CAVITY & REFLECTIVE FOIL SARKING FOLLOWED BY 100MM THICK CORE FILL BLOCKWORK WALL REFER STRUCTURAL DRAWINGS.</p> <p>W007 100MM THICK FACE BRICKWORK WALL NOM. 40 CAVITY & REFLECTIVE FOIL SARKING FOLLOWED BY 100MM THICK CORE FILL BLOCKWORK WALL REFER STRUCTURAL DRAWINGS.</p> <p>W008 100MM THICK FACE BRICKWORK WALL NOM. 40 CAVITY & REFLECTIVE FOIL SARKING FOLLOWED BY 100MM THICK CORE FILL BLOCKWORK WALL REFER STRUCTURAL DRAWINGS.</p> <p>W009 100MM THICK FACE BRICKWORK WALL NOM. 40 CAVITY & REFLECTIVE FOIL SARKING FOLLOWED BY 100MM THICK CORE FILL BLOCKWORK WALL REFER STRUCTURAL DRAWINGS.</p> <p>W010 100MM THICK FACE BRICKWORK WALL NOM. 40 CAVITY & REFLECTIVE FOIL SARKING FOLLOWED BY 100MM THICK CORE FILL BLOCKWORK WALL REFER STRUCTURAL DRAWINGS.</p>	<p>FLOOR TYPES</p> <p>F001 COMPRESSED CEMENT SLAB CLADDING WITH CONCEALED FINISHES AND PART FINISH NOM. 100MM BATTENS REFLECTIVE FOIL SARKING INTERNAL SIDE TO HAVE 100MM THICK STUD AND SOLID BATTENS TO THERMAL INSULATION WITH 2 LAYER 100MM PLASTERBOARD WITH PAINT FINISH ON INTERNAL SIDE.</p> <p>F002 COMPRESSED CEMENT SLAB CLADDING WITH CONCEALED FINISHES AND PART FINISH NOM. 100MM BATTENS REFLECTIVE FOIL SARKING INTERNAL SIDE TO HAVE 100MM THICK STUD AND SOLID BATTENS TO THERMAL INSULATION WITH 2 LAYER 100MM PLASTERBOARD WITH PAINT FINISH ON INTERNAL SIDE.</p> <p>F003 COMPRESSED CEMENT SLAB CLADDING WITH CONCEALED FINISHES AND PART FINISH NOM. 100MM BATTENS REFLECTIVE FOIL SARKING INTERNAL SIDE TO HAVE 100MM THICK STUD AND SOLID BATTENS TO THERMAL INSULATION WITH 2 LAYER 100MM PLASTERBOARD WITH PAINT FINISH ON INTERNAL SIDE.</p> <p>F004 COMPRESSED CEMENT SLAB CLADDING WITH CONCEALED FINISHES AND PART FINISH NOM. 100MM BATTENS REFLECTIVE FOIL SARKING INTERNAL SIDE TO HAVE 100MM THICK STUD AND SOLID BATTENS TO THERMAL INSULATION WITH 2 LAYER 100MM PLASTERBOARD WITH PAINT FINISH ON INTERNAL SIDE.</p> <p>F005 COMPRESSED CEMENT SLAB CLADDING WITH CONCEALED FINISHES AND PART FINISH NOM. 100MM BATTENS REFLECTIVE FOIL SARKING INTERNAL SIDE TO HAVE 100MM THICK STUD AND SOLID BATTENS TO THERMAL INSULATION WITH 2 LAYER 100MM PLASTERBOARD WITH PAINT FINISH ON INTERNAL SIDE.</p>	<p>F001 CONCRETE FLOOR BTW UNITS AND GARAGE (TILE FINISH)</p> <p>F001 100MM THICK FACE BRICKWORK WALL NOM. 40 CAVITY & REFLECTIVE FOIL SARKING FOLLOWED BY 100MM THICK CORE FILL BLOCKWORK WALL REFER STRUCTURAL DRAWINGS.</p> <p>F002 100MM THICK FACE BRICKWORK WALL NOM. 40 CAVITY & REFLECTIVE FOIL SARKING FOLLOWED BY 100MM THICK CORE FILL BLOCKWORK WALL REFER STRUCTURAL DRAWINGS.</p> <p>F003 100MM THICK FACE BRICKWORK WALL NOM. 40 CAVITY & REFLECTIVE FOIL SARKING FOLLOWED BY 100MM THICK CORE FILL BLOCKWORK WALL REFER STRUCTURAL DRAWINGS.</p> <p>F004 100MM THICK FACE BRICKWORK WALL NOM. 40 CAVITY & REFLECTIVE FOIL SARKING FOLLOWED BY 100MM THICK CORE FILL BLOCKWORK WALL REFER STRUCTURAL DRAWINGS.</p> <p>F005 100MM THICK FACE BRICKWORK WALL NOM. 40 CAVITY & REFLECTIVE FOIL SARKING FOLLOWED BY 100MM THICK CORE FILL BLOCKWORK WALL REFER STRUCTURAL DRAWINGS.</p>	<p>F002 TIMBER JOISTS FLOOR (TIMBER/CARPET FINISH)</p> <p>F002 100MM THICK FACE BRICKWORK WALL NOM. 40 CAVITY & REFLECTIVE FOIL SARKING FOLLOWED BY 100MM THICK CORE FILL BLOCKWORK WALL REFER STRUCTURAL DRAWINGS.</p> <p>F003 100MM THICK FACE BRICKWORK WALL NOM. 40 CAVITY & REFLECTIVE FOIL SARKING FOLLOWED BY 100MM THICK CORE FILL BLOCKWORK WALL REFER STRUCTURAL DRAWINGS.</p> <p>F004 100MM THICK FACE BRICKWORK WALL NOM. 40 CAVITY & REFLECTIVE FOIL SARKING FOLLOWED BY 100MM THICK CORE FILL BLOCKWORK WALL REFER STRUCTURAL DRAWINGS.</p> <p>F005 100MM THICK FACE BRICKWORK WALL NOM. 40 CAVITY & REFLECTIVE FOIL SARKING FOLLOWED BY 100MM THICK CORE FILL BLOCKWORK WALL REFER STRUCTURAL DRAWINGS.</p>	<p>F003 STEEL FRAMED STAIRS (TERRACE)</p> <p>F003 100MM THICK FACE BRICKWORK WALL NOM. 40 CAVITY & REFLECTIVE FOIL SARKING FOLLOWED BY 100MM THICK CORE FILL BLOCKWORK WALL REFER STRUCTURAL DRAWINGS.</p> <p>F004 100MM THICK FACE BRICKWORK WALL NOM. 40 CAVITY & REFLECTIVE FOIL SARKING FOLLOWED BY 100MM THICK CORE FILL BLOCKWORK WALL REFER STRUCTURAL DRAWINGS.</p> <p>F005 100MM THICK FACE BRICKWORK WALL NOM. 40 CAVITY & REFLECTIVE FOIL SARKING FOLLOWED BY 100MM THICK CORE FILL BLOCKWORK WALL REFER STRUCTURAL DRAWINGS.</p>
---	---	---	--	--	--	--	---	---	---	---

FOR CONSTRUCTION

